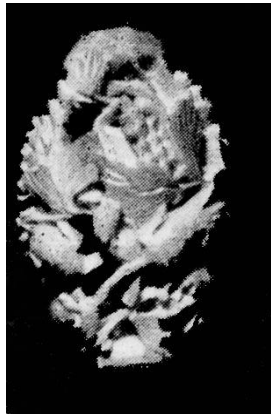


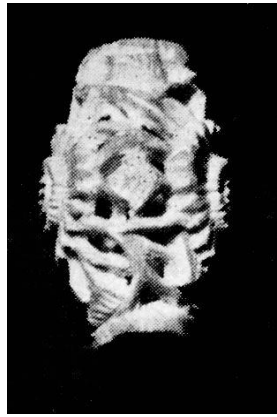
Other Collections: H.Pinto



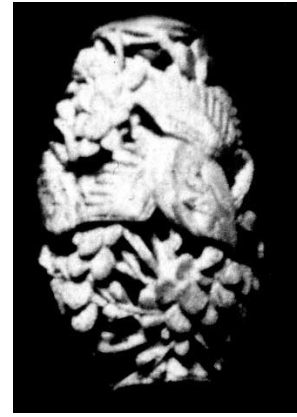
Pinto02.1



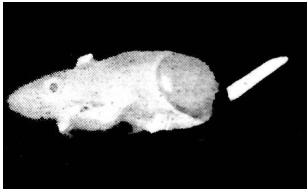
Pinto02.2



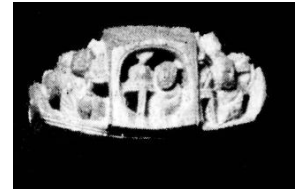
Pinto02.4



Pinto03.01



Pinto01.5



Pinto02.3



Pinto04.2

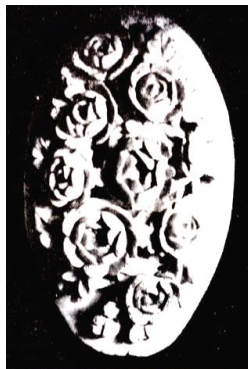
開看入竹路自有向山心



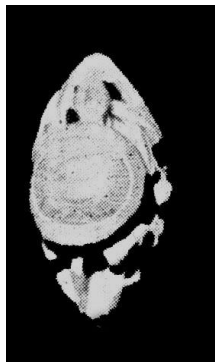
Vol I/4.03



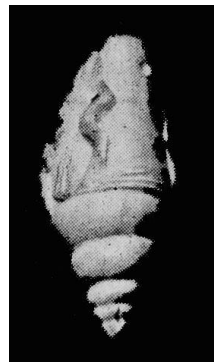
Pinto04.3



Pinto05.01



Pinto01.2



Pinto01.3



Pinto05.03

The style of these carvings is absolutely different from the ones of today but quite similar to the collection from Royal Botanical Garden Kew, London. Age-wise they are somewhere in between, Pinto collection about 1946, Kew Garden collection 1898 or earlier. Please compare the examples Pinto 1.2, 1.3, 4.2, 2.3 and 1.5 with Kew Garden of previous page. (Pictures out of magazine "Wood" at Botanical Garden Kew- London)