

Copying a design: Minor Differences / Her-Her Twins



Her-Her Twins

38 mm

CHN043B1-3_a / b



CHN043B2c



Voll II/4.08b



CHN043B3c



Examples for differences in above carvings

- 1) Picture at the top : Upper hand at Lotus
- 2) Picture below : a) Fingers on hand at the pot
b) Head nearly horizontal (left and right), middle a bit diagonal

Similar Design elsewhere: Temple at Singapore and Kaifeng – Guanyin



Medium leaving temple, Singapore



CHN051A2 40 mm



CHN051A1 35 mm



Bright Hill Temple, Singapore



CHN356 38 mm



Orchids

Vol II/1.10



CHN458 31 mm



Bright Hill Temple Singapore



CHN314 40 mm



CHN314b



Temple at Kaifeng

Similar Design elsewhere: Old House at Kaifeng / Henan Province



Squirrel with grapes



Vol II/2.06

Bamboo



Olive / Squirrel with grapes

KEW010

Photo with the kind allowance of Royal Botanical Garden Kew, London



Bamboo

Vol II/2.05



Brush rest / ivory

木子	sōng zhi = squirrel
送子	sōng = send, deliver zi = son
	grapes mean abundance

Meaning of a squirrel with grapes:
Send many sons

Different writing but nearly identical pronunciation (and then different meaning)



Snuff Bottle (glass overlay)

Similar Design elsewhere: Old House at Kaifeng / Henan Province



Dragon

Dragon

Phoenix



CHN308 32 mm



CHN096 36 mm



CHN880 31 mm



劉松年雜樹畫法

Vol I/2.21



CHN106 38 mm



Phoenix

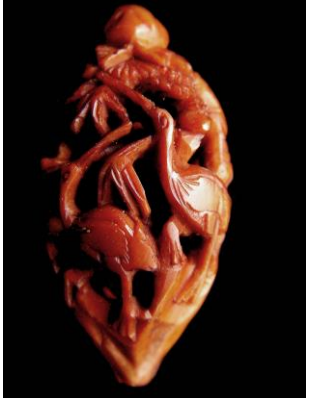
Similar Design elsewhere: Old House at Hohot / Inner Mongolia



Crane and deer



CHN280 37 mm



CHN202 36 mm
Crane



Vol I/2.40



CHN730 36 mm



CHN195 38 mm
Deer



CHN183 35 mm



CHN130 34 mm



CHN131b 35 mm



CHN990 34 mm

Similar Design elsewhere: Old Houses at Kaifeng / Henan Province



Gourd



Lion

吳仲圭樹法沈石田
嘗摹之



CHN263 36 mm
Gourd



Vol I/2.18



CHN244 34 mm
Lion



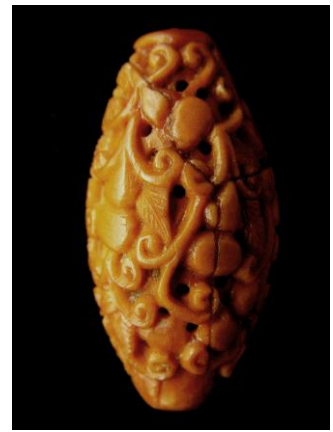
CHN129.02 31 mm
Gourd



CHN264 34 mm



CHN326 31 mm



CHN129 31 mm

Similar Design elsewhere: Hotel at Beijing



Fu (with ingot)
CHN121



Lu (with ruyi)



Shou (with peach) 37 mm

Fu, Lu, Shou – Three Gods of Happiness

Fu- God of Happiness with an ingot, an emblem of wealth. The ingot was a silver bar used as currency.

Lu- God of Status or Affluence with a ruyi as symbol. The ruyi symbolizes wishes to become true. Thus Lu with a ruyi means fulfilment of wishes for professional and social success and advancement.

Shou- God of Longevity, with a peach as symbol

Very often, Shou is shown together with a bat (sometimes a coin in its mouth) and a deer. As bat (fu) is phonetically identical with wealth and deer is phonetically identical with status (lu), the meaning of such a carving (see below) is the same as the Three Gods of Happiness together (see above).

Very often other longevity symbols, like a pine tree, a peach as fruit, blossom or leaves are added.



Shou / Outside Taiwan Hotel - Beijing



(Pian) Fu (=Bat)
CHN185



Lu (=Deer)



Shou (God) 38 mm

Similar Design elsewhere: Bright Hill Temple / Singapore



The Eight Immortals crossing the Sea to join the "Peach Festival" of Xi-Wang Mu



CHN143 44 mm



Vol I/2.10



CHN137 39 mm



CHN143



CHN083 42 mm

Name of Eight Immortals with their symbols (according picture at top / from left to right):

Name

- Zhang Guo-lao
- Lu Dong-bin
- Lan Cai-he
- Zhong-li Quan
- Li Tie-guai
- Lan Cai-jiu
- Cao Guo-jiu
- He Xiang-gu

Symbol

- Fish drum
- Sword
- Flute
- Fan
- Gourd
- Flower Basket
- Castanets
- Lotus (woman)



Olive CHN386

37 mm

Similar Design elsewhere: Temples / Monkey God, Qilin



CHN286

34 mm



Monkey God Temple – Singapore



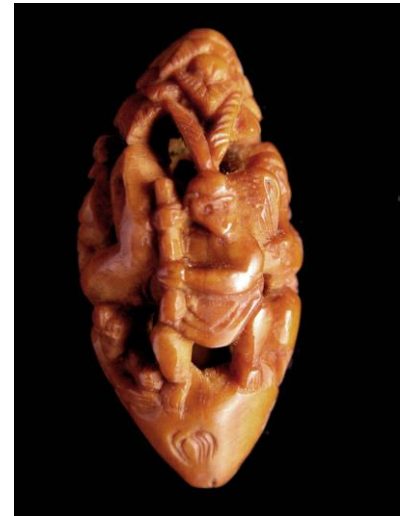
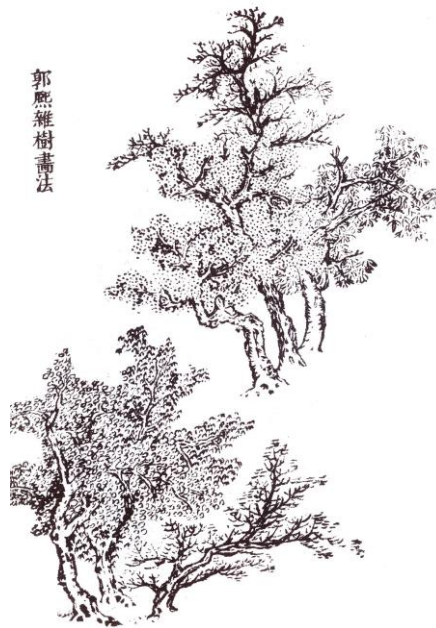
CHN034A1

38 mm



CHN239

35 mm



CHN508.03

32 mm

Vol I /2.22



CHN472
Qilin

30 mm



New Year Festival : Boy riding on Qilin / Temple at Kaifeng – Henan Province



CHN472
Boy riding on Qilin

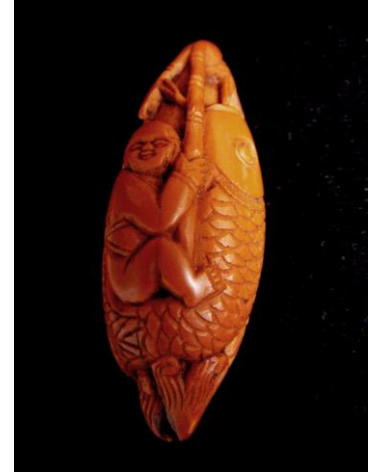
Similar Design elsewhere: Fish - Temple, Snuff Bottle, Netsuke



CHN294.01 34 mm



CHN017A2 40 mm



CHN049A1 37 mm



Netsuke / Ivory
CHNI078



Fish Gong / Bright Hill Temple - Singapore



Snuff Bottle / Ivory
CHNI079



CHN050A2 42 mm



Snuff Bottle / Amber CHNB009B



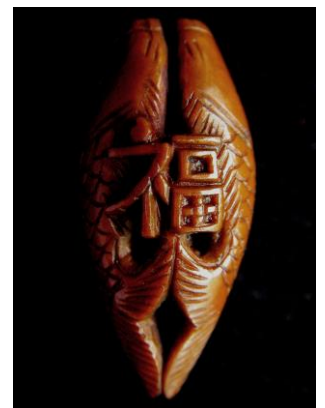
CHN379 33 mm



CHN989 39 mm



CHN289 34 mm



CHN366 27 mm

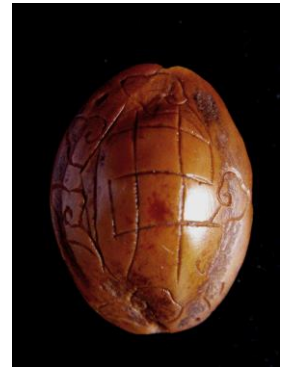
Similar Design elsewhere: Temple, Chamber of Commerce / Singapore



Apricot Buddha CHN028



Entrance to Bright Hill Temple – Singapore
Writing: Fo= Buddha, figures: crane with gourd / peach blossom, deer, Her-Her twin



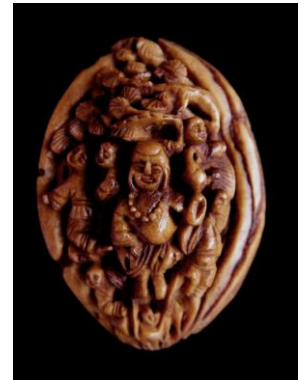
CHN028
Writing: Fo 24 mm



Olive Sakyamuni Buddha CHN524 26 mm



Olive "Fat Belly" Buddha", children CHN981 37 mm



Peach Buddha / 5 children CHN801 37 mm



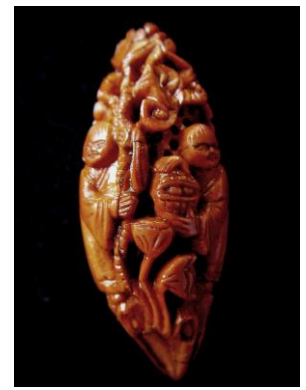
Dragon CHN566 31 mm



Crane CHN089 35 mm



Deer CHN940 34 mm



Her-Her CHN297.02 41 mm



9 Dragon-Wall outside Chamber of Commerce – Singapore (left side of entrance gate)

Quality of Carving: Example Walnuts



Eight Immortals CHN398.01 \approx x 1.6



\approx x 0.8



\approx x 1.0



Monkey God Sun Mukong CHN372 \approx x 1.6



Ma Tsu P'o or Queen of Heaven

Temple Singapore

She is the seafarer's goddess, to whom they pray for fine weather and safe conduct. Her maids (see background) are 'Thousand Miles Eyes' and 'Silent Wind Ears'. They can see everything happening in a surrounding of 1000 miles or can hear what the wind is carrying along from far away.

Quality of Carving: Example Walnuts



18 Luohan

≈ x 1.8



CHN387

≈ x1.0



CHN373

≈ x 1.0



18 Luohan

1.9

≈ x



Eight Immortals / Wall outside a temple at Hohot – Inner Mongolia

Initially I preferred the walnuts on the left page. The one on this page (CHN387) I bought just as an example for different styles or artists. Meanwhile this style is one of my favourites. Unfortunately I was unable to find out where the artist is from or where to get some other examples.